

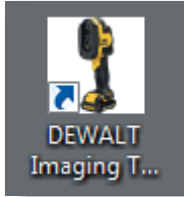
DEWALT®

Imaging Thermometer DCT416



Report Writing Software Instruction Manual

Installing the Software



The latest version of the reporting software is available from www.dewalt.com on the DCT416 Imaging Thermometer product page. Click the link **Download Report Writing Software**. Open and run the file **DEWALT Imaging Thermometer PC setup.exe**. Once the software has been installed, an icon will appear on your desktop.

Transferring Saved Images to a PC

The DCT416 Imaging Thermometer saves images in folders on the micro SD card. A new folder is automatically created every time the unit is powered on. Each saved image will include both the visual and thermal picture and is saved in bitmap (.bmp) format.

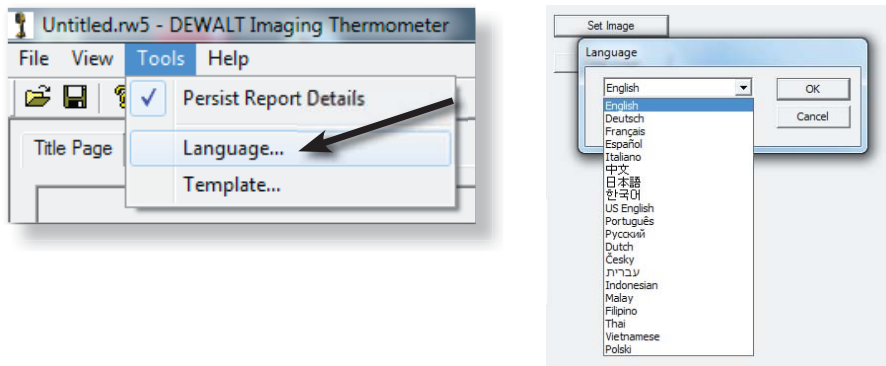
To transfer an image to a PC, take the micro SD card out of the imaging thermometer and insert it into a suitable card reader. Use Windows Explorer™ to locate the files on the micro SD card and copy the complete folders to the PC. When images are safely transferred to a PC, be sure to insert the card back into the DCT416 Imaging Thermometer.

* Windows Explorer is a trademark of Microsoft Corporation

Customizing the Software

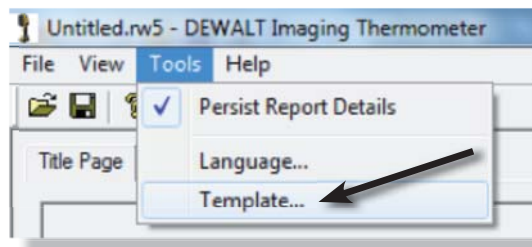
LANGUAGES

1. Double click on the Imaging Thermometer software icon to open the software.
2. To select a different language, go to the **Tools** drop down menu and select **Language**. A drop down menu will appear with options for languages. Choose the desired language and select **OK**. You will have to restart the software for the change to occur.



TEMPLATES

There are four trade templates to customize the software. The templates are Maintenance, Building, Mechanical / Electrical and Custom. To select a trade template, go to the **Tools** drop down menu and select **Template**. Choose the desired template and select **OK**. You will have to restart the software for the change to occur.



Overview: Tabs

The software has three main tabs:

Title Page: Includes name, date, general comments and one image.

Image Select: Import all images to include in the report and customize image blend setting and thermal / visual alignment.

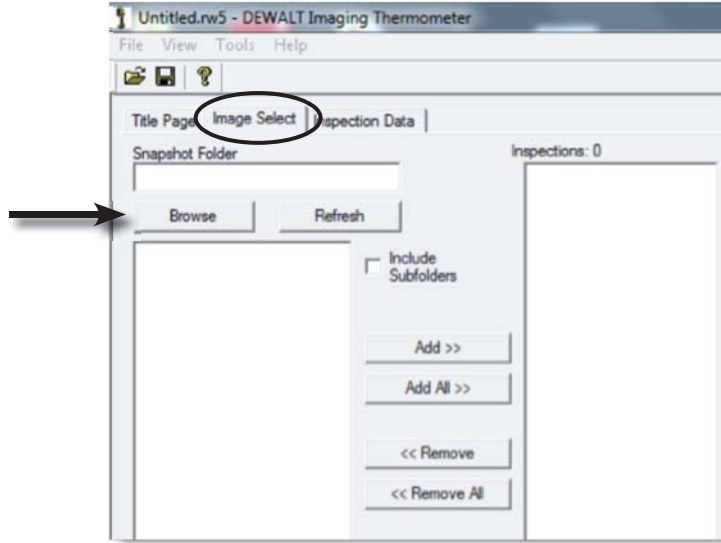
Inspection Data: Input all relevant data for each image including location details, environmental measurements, recommended next steps and priority. The emissivity, spot temperature and reflected temperature are also reported.



Starting a New Report

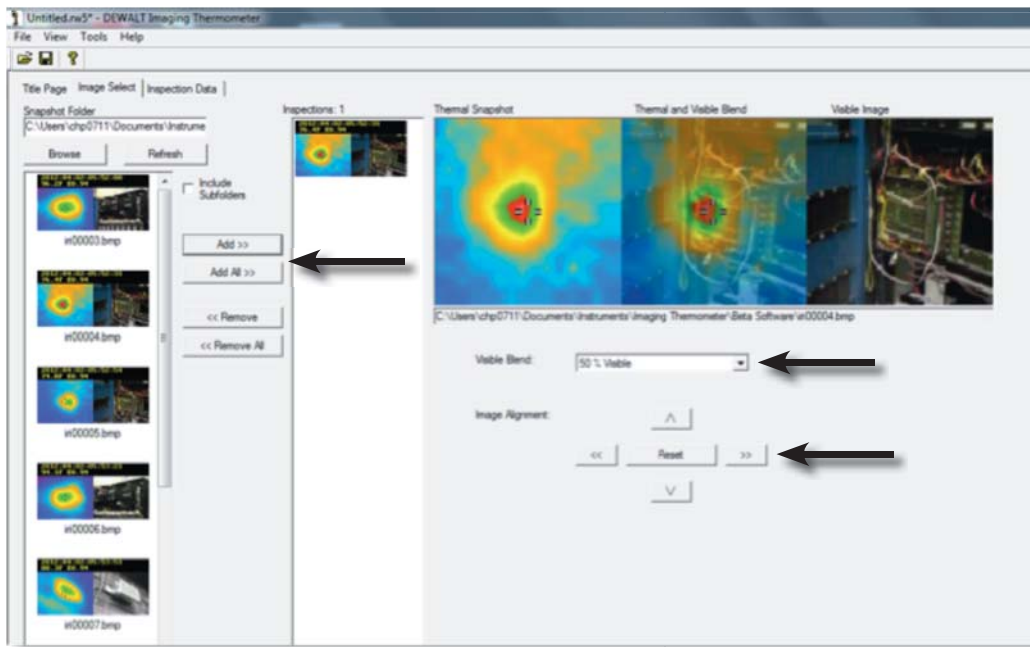
IMPORTING AND CUSTOMIZING IMAGES

To start a new report, go to the **Image Select** Tab and select **Browse**. Navigate to the folder where the stored images are saved. Choose an image and select **Open**.



All of the images in the folder will load in the preview window. You can click on **Add All** to load all of the images into the reporting software or highlight one image at a time and select **Add**.

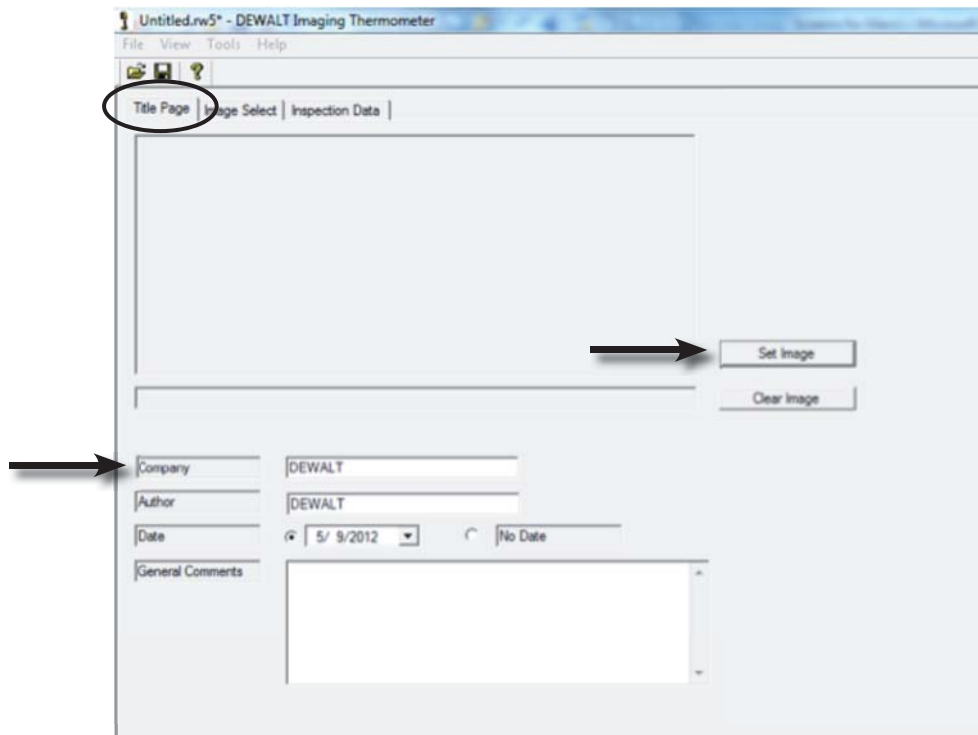
Each image can be adjusted to customize the blend settings as well as the alignment. Click on an image and then use the **Visible Blend** drop down menu and the **Image Alignment** arrows.



TITLE PAGE

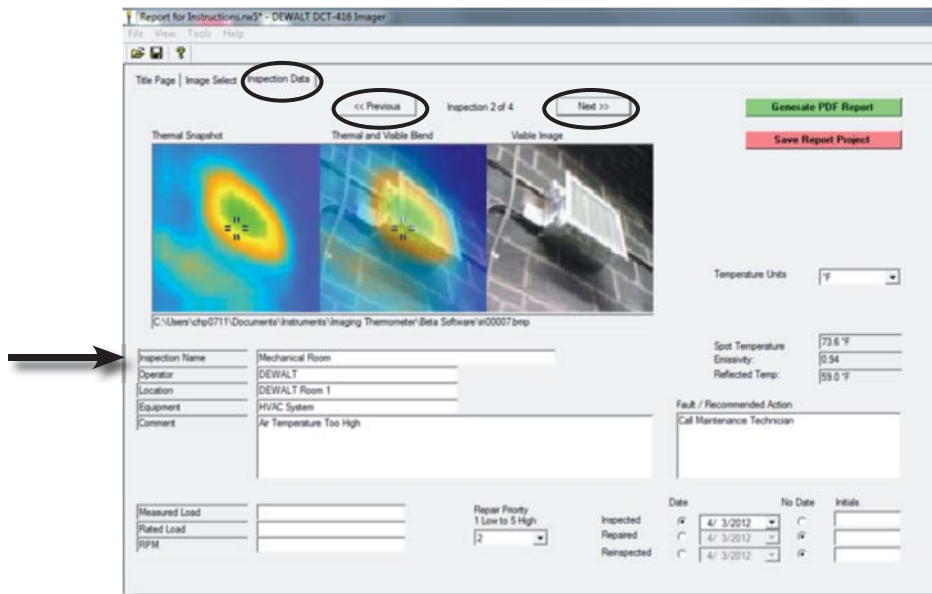
After all of the images are uploaded, select the **Title Page** tab.

The **Title Page** tab populates the report cover page. Click the **Set Image** button to choose an image to include on the cover page. There are also fields to populate the company, report author, date and general comments.



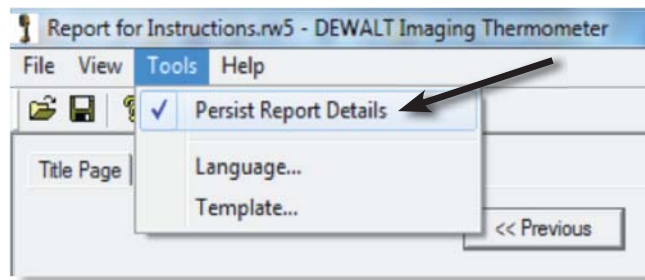
INSPECTION DATA

The **Inspection Data** tab has fields to enter more information about each selected image. Click the **Previous** or **Next** button to navigate through the images. All of the fields at the bottom of the screen can be populated for each individual image.



PERSIST REPORT DETAILS

Under the Tools drop down menu, there is an option called **Persist Report Details**. When this option is selected, certain fields such as *Operator*, *Location* and *Equipment* will be duplicated throughout the report. Once the information has been copied, the feature can be switched back off again to avoid unexpected copying of information. Information is only copied forward in the document. For example, if the feature is selected when on page 3 of a 10-page report, the information will only be copied from page 3 forward and page 1 and 2 will be left unchanged.



SAVING, EMAILING, PRINTING

After completion of the **Inspection Data**, save the project by selecting **Save Report Project** or by selecting the disk icon. The report can also be saved as a PDF by selecting **Generate PDF Report**.



Your report can now be printed out, if desired, or it can be attached as a PDF to an email for distribution.

DEWALT Industrial Tool Co., 701 East Joppa Road, Baltimore, MD 21286
(JUN12) Part No. DCT416eng01NA DCT416 Copyright © 2012 DEWALT

The following are trademarks for one or more DEWALT power tools: the yellow and black color scheme, the "D" shaped air intake grill, the array of pyramids on the handgrip, the kit box configuration, and the array of lozenge-shaped humps on the surface of the tool.